



ABINGDON

Abingdon
Foundation
Impact Report

2019-22

Your
support
in action



Welcome

A message from the Headmaster...



Mike Windsor
Headmaster

As I write today, the world feels very different from when I introduced Abingdon's first impact report in late 2019. Global events such as the pandemic, the death of George Floyd and now the conflict in Ukraine have had an impact upon us all and have changed the way we look at life today. It is testimony to the support for the School from pupils, colleagues, OAs, parents, governors and friends that Abingdon has continued to thrive. Indeed, the commitment, generosity and ingenuity of the School community through these uncertain times has brought us all closer together and strengthened our connections with one another.

A prime example of this is our 20 year old relationship with the charity Agape, based in Moldova. During this period, many students and members of staff have visited to assist with summer camps, supporting Agape's work caring for children in one of the poorest countries in Europe. Now our friends in Moldova face a different challenge as they cope with the influx of refugees from Ukraine. I'm delighted therefore that our Charity Committee was able to make a donation of over £15,000 to support their work, meaning

that during the course of our relationship we have given over £100,000.

This is just one example of the way that our community has pulled together. We've had a wonderful response to our bursary campaign, *Seven years to change a life*, which aims to ensure that pupils can benefit from an education here regardless of their financial circumstances. Parents also stepped up admirably to support other Abingdon families facing hardship due to the pandemic.

I'm hugely proud of our contribution to the OX14 Learning Partnership which brings together six maintained and independent schools to challenge, inspire and support pupils across the town. We're grateful to the Mercers' Company for their support which has funded two posts, one to support the Learning Partnership, and one to address the local need for support in Mental Health and Wellbeing.

As you read this report, I hope you will be impressed by the way in which our entire community has come together to support one another, and also those outside the School gates. It is an exciting and inspiring story and I look forward to the next chapter.



Donations to Abingdon

September 2019 to January 2022

During the reporting year 2020-21 we received £500,983 into the donation accounts through OA, parent (past and present), staff, governor and pupil generosity, Gift Aid and interest. This represents a significant increase on the previous year's donation income of £386,814.

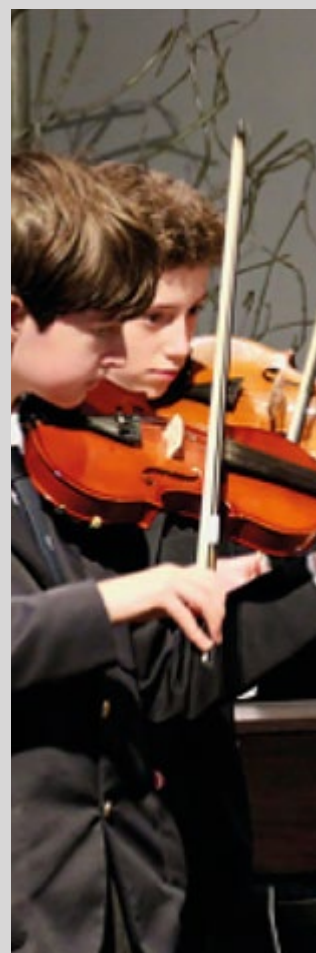
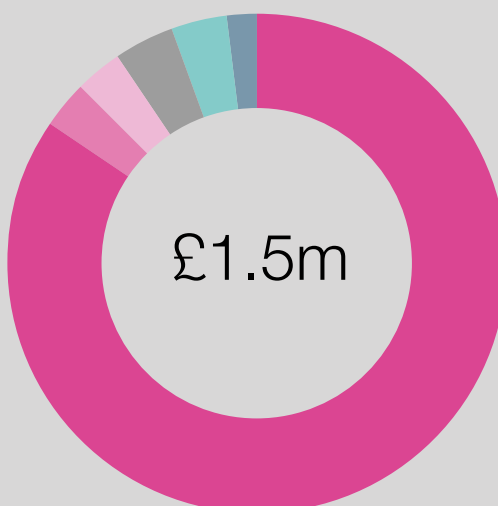
Most of the School's annual income comes from school fees – approximately 96%; with 2% from ancillary trading. The remainder comes from donated income.

From September 2019 to January 2022 the School received nearly £1.5m in donations and pledges. The primary focus for fundraising has been concentrated on our bursary programme as can be seen below.

Total income and destinations

Bursaries (donations and pledges)	£1,256,990
Hardship bursary support from parents (during COVID-19 pandemic)	£44,270
Parent-led associations	£58,972
Unrestricted donations	£57,210
Donations to partnerships	£54,000
Other donation income*	£28,460*
Total	£1,499,902

*includes: awards, buildings and grounds, CCF, Moldova donations, trips and prizes



Unlocking Potential

through Bursaries

BURSARIES AT ABINGDON

Why Bursaries Matter

What our Sixth Formers say

My bursary to attend Abingdon has changed my life in countless ways - more than I could ever fully acknowledge. From the day I arrived to now, it has provided me with access to incredible academic and pastoral support, as well as a network of lifelong friends and connections. Whether I've had teachers devote countless hours outside of the school day to help stretch and develop me, or my housemaster regularly checking in with me, Abingdon has helped me to feel supported and like I truly belong.

Most importantly, my Abingdon education has helped me to not only reach the top of my academic potential, but also to become confident and assured in my own capabilities. The School has always treated me as an individual and constantly reinforced the message that I can do whatever I want to; they have equipped me with both the ability and mindset to do so.

Supporting a bursary is not only a financial gift; it is a gift that has the power to transform an individual's life and help them to reach their full potential in limitless ways.

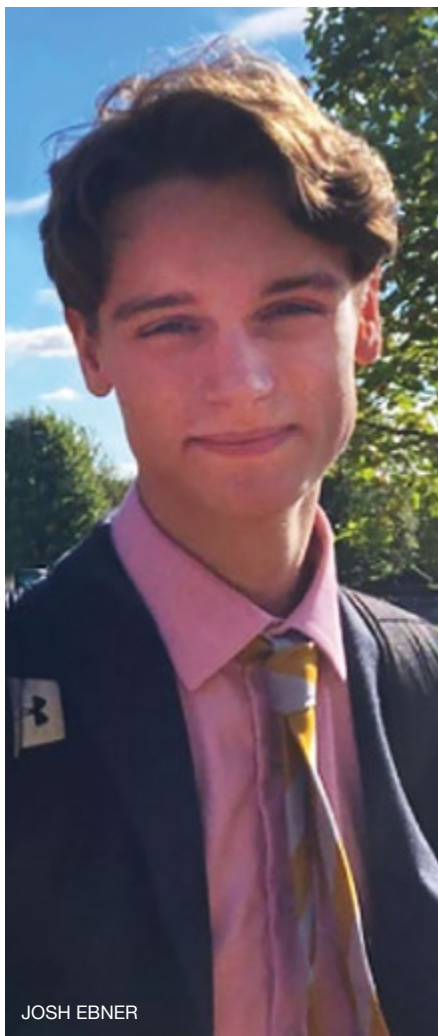
Words cannot even begin to express the full extent of my gratitude to those many generous individuals that have made it possible for me to attend Abingdon. Their kindness and investment has made a lifelong impact on me - I am the person I am today because of them. I can only hope that one day, I will be able to give back in the same way their generosity has given to me.

Simply put, Abingdon is a school centred around community and helping all to belong. My bursary provided me with a step into this environment that has helped to shape me into the person I am today. I will be forever grateful and indebted.

U6 student

“

Supporting a bursary is not only a financial gift; it is a gift that has the power to transform an individual's life.



JOSH EBNER

bursary has enabled me to stay here for the duration of my education. Without it this wouldn't have been possible.

I would like to tell those people who help by contributing to the bursary fund that their support is hugely beneficial and has been life changing.

Josh Ebner (OA 2022)

Attending Abingdon gave me access to brilliant academic teaching, as well as presenting me with a plethora of extracurricular opportunities. I've particularly valued the great sports facilities, something I feel I've tried to make the most out of over the last five years.

I have benefited from amazing resources and teachers to guide me through my academic career. Furthermore, the School's down to earth atmosphere and encouraging environment has certainly improved my confidence and given me a real sense of independence as I look forward to life beyond Abingdon.

Bursaries have an everlasting impact and provide a once in a lifetime opportunity. Thank you for your generosity.

U6 student

Abingdon School is a fabulous place which has offered me a massive number of opportunities. My family's financial situation meant none of this would have been possible had I not received a bursary. The School has encouraged me to excel academically, whilst enabling me to enjoy extraordinary extracurricular activities over the years, many of which would not have been available to me had I not attended Abingdon.

I am sure that the opportunities the School has given me will have a lasting benefit for me in my further education at university and later in life. I have been able to meet so many incredible people with many of whom I have formed what I know will be long standing friendships.

I think bursaries are very important for schools like Abingdon. They allow students who would benefit from a more challenging academic setting to excel. I feel immensely fortunate to have been granted a bursary and, by extension, an Abingdon education. I would like to thank everyone who contributed to my bursary during the past six years. To anyone considering supporting the bursary programme, I would urge you to go ahead, and know that you are making a hugely positive impact on someone's life.

Josh Giles-Friend (OA 2022)

“

I feel immensely fortunate to have been granted a bursary and, by extension, an Abingdon education.

Being able to go to Abingdon has definitely changed my life. Abingdon School has been an amazing experience, where I've been lucky to go on some great school trips and participate in many extracurricular activities - what we know as the Other Half. I don't think I would have been able to have any of these experiences had I gone elsewhere.

I would say that any support for bursaries is greatly appreciated and I would encourage anyone thinking about it to give, so that more people like me can attend Abingdon. The support of a

“

I would like to tell those people who helped contribute to the bursary fund that their support is hugely beneficial.



JOSH GILES-FRIEND

BURSARIES AT ABINGDON

Abingdon 150 Giving Day February 2021

£147,481

Total amount raised

445

Individual donations

Abingdon's first Giving Day was launched at 10am on Wednesday 3 February 2021 - a 30 hour digital fundraising and awareness campaign setting out to raise awareness about our ambition to fund more bursary places. Our global Abingdon community came together across our online channels throughout the 30 hours to help spread the message.

Giving Day coincided with the 150 year anniversary of the School being at Albert Park. The School site was closed as we were all in lockdown working and learning remotely around the world, but pupils and staff participated in 150 themed activities wherever they were. The Headmaster kicked off the day by ringing the iconic school bell 63 times, a key number for Abingdon ever since our re-endowment by John Roysse in 1563. Lower School Housemaster, Mr Jenkins, took over and brought the bell count to 150.

We were overwhelmed with how the Abingdon community came together to raise nearly £150,000 from over 440 donations in our 150th anniversary year. Thanks in part to this strong show of support, 11 boys were offered a bursary enabling them to take up a place at Abingdon in September 2021. In this academic year (2021-22) there are 69 pupils attending Abingdon with the help of a bursary. The generosity of our community has made this possible and we are very grateful. ■



BURSARIES AT ABINGDON

Making the impossible possible



24 members

Income and pledges since launch

£688,577

In October 2021, our *Seven years to change a life* campaign was launched. Committing to widening access to an Abingdon education through the growth of our bursary programme; by 2026 it is our ambition that 10% of pupils will benefit. We want to ensure that every child who is offered a place at Abingdon is able to take up their place irrespective of financial circumstances. We are delighted that so many of our community have already committed to support us on this journey

Since the launch of the campaign we have also welcomed 24 members to our 110 Club; recognising the significant commitment of those who have pledged or donated to support a bursary place at 10% of fees or higher. We look forward to welcoming members to our inaugural event at Abingdon on 21 May 2022.

By the end of January 2022 donations and pledges towards this new bursary campaign exceeded £688,000. This will enable us to offer more bursary places from September 2022. ■



The 110 Club

Current members include:

Richard Butland	OA 1969
Henry Carter	OA 2006
Jonathan Clarke	OA 1976
Tony Edwards	OA 1962
Richard Griffiths	OA 1973
Peter Kandiah	OA 1959
Andrew King	OA 1962
Terence Libby	OA 1961
Gareth Morris	OA 1976
Patrick Sarsfield-Hall	OA 1955
Telfer Saywell	OA 1958
Mike Stevens	OA 1968
Damian Sutcliffe	OA 1987
John Walker	OA 1969
James Warner	OA 1995
Peter Watson	OA 1974
Alan Williams	OA 1965
Stewart Womar	OA 1959
Peter Willerton	Former Staff

Some of our members wish to remain anonymous.

Supporting Future Generations:

My decision to give back

Alan's story: from Abingdon town to the Bar, the story of a local boy

Abingdon has provided a top quality education for thousands of children down the generations and has always promoted the belief that OAs have a role to play in society. I entered Abingdon in 1957 as a local boy from the town, benefiting from the long abolished Direct Grant scheme financed by the County Council. Abingdon now has a bursary programme that enables financial help to be given to able children who wouldn't otherwise be able to receive the education that so many of us received in our time. That bursary programme has been a success but it needs to be a much greater success to help more children of great potential who would benefit from all that an Abingdon education offers, but whose family circumstances do not permit this without assistance.

From Abingdon I went to university – the first in my family to do so – before entering teaching and then being called to the Bar and practising as a criminal barrister for 23 years. The latter years of my legal career were in the judicial office.

I have no doubt that I owe much to Abingdon which stretched and challenged me. Good teaching and numerous extracurricular activities had a positive influence on me, including sport, drama, music and the CCF – with the Debating Society being of particular interest! Abingdon's Debating Society was a good precursor to later jury speeches. Don't lose your audience!

All of this, together with a truly inspirational Headmaster in Sir James Cobban, has held me in good stead for the rest of my life. Having gained so much from Abingdon, I firmly believe that future generations should have access to the sort of education I enjoyed. Giving to the School's bursary programme and including Abingdon in my will is an obvious and natural way to support that belief. ■

Alan R Williams
OA 1965



BURSARIES AT ABINGDON

A Life Giving Back

Marjory Morris MBE

Gareth Morris
OA 1976

“

There can be no better way to support young people than allowing them to enjoy a great education.

My mother last visited the School at the opening ceremony for the Yang Science Centre which she and I supported by sponsoring the Linus Pauling laboratory. She was undoubtedly as excited to see the School and what was happening there as she had been in 1968, when she'd dropped me off for my entrance exam. This was a continuation of her involvement and commitment to Abingdon since the day I got the offer to become a pupil.

My parents were passionate about education. They were determined that I would get the

best start in life that they could give me, and even then I was aware of what they had to do to ensure that I was able to attend Abingdon School. From my point of view, I look back at my time at Abingdon and know that it was hugely influential in allowing me to become the person that I am. Abingdon nurtured my love of both science and history through great masters. It taught me how to be an independent thinker. It allowed me to develop my personality. I know that my parents considered their money very well spent between 1969 and 1976. They thoroughly enjoyed being part of the School community which they continued to support in the years after I had left.

When the time came to finalise my mother's estate in 2020, I was delighted to be able to continue my parents' support of Abingdon through her legacy. Over the years my parents had supported the amazing building programmes at the School, but on this occasion the impact had to be more personal. Her bequest was to give another child the same chance in life that I had had and so her gift is supporting the School's bursary programme.

At this time it seems to me that there can be no better way to support young people than allowing them to enjoy a great education. The fact that Abingdon provides so many opportunities, both in academic life and the extracurricular programme of the Other Half, is fantastic. Boys with a wide range of aptitudes can thrive. Such talents lie everywhere in our community and I firmly believe that a school community is strong when it has a breadth of pupils of varying talents and backgrounds. Abingdon's bursary programme allows boys, who would not otherwise be able to benefit, to enjoy what Abingdon has to offer.

I know that Abingdon has ambitious plans for the programme and to my mind it is built very much in the spirit of John Roysse. I am delighted that as a family we have played a part in supporting it. ■



A Gift of Time

Thanking you for your time and expertise

We are grateful to all the OAs and friends of Abingdon who donated their time to support the OA Club and School activities. This has included the following:

Simon Evans (OA 2002) and **John Terry** (OA 1997)
Working in Theatre, Career Insight Talk

Alex Mugnaioni (OA 2007)
Diary of a drama production with Lower School

Tommy Nicholson (OA 2015) and **Jack Walsh** (OA 2015)
Gave a talk to U6 - Preparing for university and their work with the charity 'Rowing for Healthy Minds'

Chris Mitty (OA 1993), **Howard Feather** (OA 2003) and **Philip Hatzis** (OA 2007)
Staunch supporters of the Young Enterprise programme

Kieran O'Leary (OA 1998)
Helped with a series of personal financial management sessions

Arthur Verdin (OA 2006)
Delivered a virtual wine masterclass for the 1563 Society

Matt Boyd (OA 2011) and **Jonathan Prest-Smith** (2010)
Guest Speakers on Leavers' Day 2020 and 2021

Kathy Howat (Current Parent) and **John Walker** (OA 1969)
Conducted interviews for the ASPA and OA Club Travel Awards

Neil Carson (OA 1994)
Virtual talk on Computer Science and Software Engineering

Ben Haveron (OA 2011), **Ben Hayes** (OA 2003) and **Henry Mills** (OA 2010)
Panellists for Modern Languages Careers Event 2021

Gap Year Advice Evenings:

2020: **Harry Copson** (OA 2011) and **Felix Newman** (OA 2012)
2021: **Jacques Tasker** (2015) and **Rory Marsh** (OA 2012)
2022: **George Aylard** (OA 2017) and **Lancelot Wilson** (OA 2020)

Some of our OAs and friends support the School by giving their time to serve on the committees of the OA Club and the 1563 Society. Their advice is invaluable.

Current OA Club Committee members:

Chairman
Julian Denée (OA 1991)
President
Henry Scarlett (OA 2007)
Elected Members:
John Walker (OA 1969)
Christopher Clayton (OA 1973)
Ken Welby (OA 1984)
James Smethurst (OA 1989)
David Lindgren (OA 1993)
Sebastian Wilson (OA 2008)
Peter Moore (OA 2013)
Ian Fishpool
(Honorary OA and Former Common Room)

1563 Society Committee members:

Chairman
Alan Williams (OA 1965)
Elected members:
Christopher Pickup (OA 1960)
Terence Libby (OA 1961)
Mike Stevens (OA 1968)
John Walker (OA 1969)
Paul Evans (OA 1975)
Simon Hills (OA 1975)
Henry Carter (OA 2006)
Diana Cobban May
(Honorary OA)

Donations from Parent-led Associations

The School is immensely grateful for the combined support and fundraising efforts from our parent associations including: the Second-hand Uniform Shop (SUS), Friends of Abingdon School Boat Club (FASBC), Touchliners (Rugby), Hockey Griffens, The Music Society and the Abingdon School Parent Association (ASPA).

Donation income from September 2019 to January 2022

SUS	£13,942
FASBC	£18,000
Touchliners	£8,000
ASPA	£13,730
Music Society	£5,300
Total	£58,972

Parent-led fundraising has enabled the successful launch of a wide range of projects and initiatives which benefit pupils and, where possible, enrich and support our partnership activities. Items purchased include:



Biology terrarium



CCF uniforms



Mac mini for the music department



Go Pro camera



Tuba

The Mercers' Company

Supporting a common goal through funded initiatives

The Mercers' Company is a 700 year old City Livery company with a philanthropic focus that today includes young people and education.

John Roysse (1500-1571) was a mercer, a dealer in fine cloth. Educated at Abingdon School, he joined the Mercers' Company in 1526. In 1563 he donated money to help the School expand into new premises, and endowed it with two of his London properties in Birch Lane.

Roysse's contribution to his old school has been acknowledged and honoured in many ways over the centuries. Roysse's coat of arms appears in a portrait of him which hangs in the School. The griffin within the arms (always spelt this way to reflect the spelling in the original grant of arms) has become the School's emblem.



In 1870 the School moved to its current site in Albert Park, a move made possible by the sale of Roysse's Birch Lane properties.



Four hundred years after Roysse's death in 1571, Headmaster Eric Anderson's wife, Poppy rediscovered Roysse's link to the Mercers' and invited the Company to renew its connection with the School. Since then the Mercers' have been generous supporters of capital projects and of our impressive partnership programmes.

The School has always been grateful to John Roysse – for the money he gave to create the schoolroom, the endowment of his Birch Lane properties and now, in particular, for the connection he created between Abingdon School and the Mercers' Company. In 2000, in gratitude, the School presented the Company with a stained glass panel of Roysse's coat of arms.

Sarah Wearne, Archivist

In 2020 a grant was awarded to Abingdon by the Mercers' Company to support the growth of our partnership work, enabling us to push forward on initiatives in specific areas of need in collaboration with our partner schools across Abingdon and beyond.

The grant enabled the School to create two new roles. The **Mental Health and Wellbeing Coordinator** works tirelessly with schools in the partnership to support and develop mental health and wellbeing support for students, staff and parents in the community.

The **Partnership Coordinator** works closely with the Director of Partnerships to implement and develop partnership activities and programmes. The post is a critical link between partner schools and has played a large part in the successful launch of the new formalised partnership the OX14 Learning Partnership.

The Partnership Coordinator also sits on the steering group for our Confidence in STEM programme, a project for Year 9-11 students which launched in 2020 with support from the Mercers' Company.



Mental Health and Wellbeing



The focus of the Mental Health and Wellbeing Coordinator is centred on the Whole School Approach to mental health and wellbeing by supporting students, staff and parents in a variety of primary and secondary schools in Oxfordshire.



We recognise the importance of prevention and early intervention strategies for young people's mental health, which is why we have shared a variety of resources on children's wellbeing and emotional regulation with several primary and prep schools. Our work in primary schools across Oxfordshire to support Relationships and Sex Education has continued to make a strong impact. A year 5 parent shared that her daughter has *"a more thorough understanding of so much more of her personal development since these sessions started, and the sessions have opened doors to allow more open discussions at home that previously my daughter wasn't keen to discuss."*



Natalie's knowledge, expertise and passion has provided us with valuable resources and enabled me to roll out whole school strategies which are more thorough than in previous years.

Amy Prior, John Mason School

With the easing of Covid restrictions, we have been able to work more directly with students and staff, particularly in John Mason School and Fitzharrys School. This has included individual, paired and group sessions on managing stress and anxiety, 6th form assemblies, whole staff INSET on how to support a student's mental health and how to support a friend who is self-harming.

Through our collaboration with the Oxford Diocese Board of Education (serving over 7,000 pupils), we delivered four webinars for headteachers, school governors and all staff on Staff Wellbeing, reaching 108 schools and 127 attendees.

We have delivered in-person INSETs for primary schools on Staff Wellbeing and are helping these schools to develop a strategic approach to managing staff workload, flexibility and autonomy.

We have been able to offer the Youth Mental Health First Aid training course free of charge to school staff and charity sector workers in Oxfordshire and beyond. This course is delivered five times a year and, over the next few years, we aim to increase our capacity



At a time of immense pressure in schools, having an expert with the knowledge and skills to lead us in focusing on how we could practically address these issues was hugely beneficial.

Ruth Bennie, Deputy Director for the ODBE

for external delegates and to introduce the Adult Mental Health First Aid training for senior and middle management.

Going forward, we aim to continue to develop these important relationships, with a focus on early intervention for mental health issues, parental engagement and strategies to support staff wellbeing in a clear and practical way. Through the Whole School Approach, we also plan to explore the impact of the digital world on mental health and give greater support to families on how to sustain a healthy approach to the use of technology. We hope to use additional funding for specialist training on specific mental health issues and to create more opportunities for parental and community engagement.

Natalie Hunt, Mental Health and Wellbeing Coordinator

ABINGDON SCHOOL IN PARTNERSHIP

Working Side by Side

with our partner schools

Historically, Abingdon School has always worked with schools in the local area on an informal basis. Over the last five years, working in partnership with other schools has become an embedded aim of the School. The School is a founding member of the OX14 Learning Partnership, a new formal Independent and State School Partnership made up of six schools in the local area; Abingdon, Fitzharrys, Larkmead, John Mason, Radley College, St Helen and St Katharine. Its aim is to provide opportunities for students and staff across Abingdon to be challenged, inspired and learn from each other as well as providing mental health and wellbeing support across the partnership.

24,261

PUPIL EXPERIENCES

235

ACTIVITIES AND EVENTS

70

SCHOOLS AND INSTITUTIONS

1,000+

ABINGDON PUPILS INVOLVED

1,300

ADDITIONAL HOURS
WORKED BY STAFF

<https://www.abingdon.org.uk/about/abingdon-school-in-partnership/>

<https://www.ox14lp.org.uk/about-us/>

<https://www.abingdonsciencepartnership.org/>



“

We are delighted to continue working with local schools as part of this partnership. We have the same vision; that our children access the best learning opportunities and that our staff excel... OX14 is founded on these principles.

Sarah Brinkley, Executive Headteacher of Abingdon Learning Trust

“

Each school operates differently but we all have so much to learn from one another by sharing best practice.

Rob Southwell-Sander, Director of Partnerships at Abingdon School

“

The partnership gives us the opportunity to look at things from a different perspective, particularly when dealing with equality and diversity and social issues we, as young people, face.

Student Voice member

“

I really enjoyed the experience. I would highly recommend it to others as it gives you skills which you can't be taught in a classroom and can only learn in the sessions.

Academic Coaching feedback

Impact on Pupils and the Wider Community

A range of activities and events are available to students and staff across our partner schools. These create opportunities for collaboration and mutual benefit in a diverse community. Here are some examples:

Primary School Events

including the Times and Places topic morning and the Primary Business Challenge as well as tag rugby coaching sessions in schools.



Peer Support Lead Programme

has seen over 50 students come together to learn more about supporting younger students with their mental health and wellbeing. This programme has included training sessions and meetings to discuss key strategies.



Oxfordshire Academy of Broadcast Journalism

offers sessions for students on how to create a podcast, write a blog or learn presenting skills with tuition from experts in the field. Uptake has been good and students have shown great enthusiasm for the course.



Rowing Sessions

on a weekly basis for students from a partner school with sessions held in the pool and out on the river.



Academic Coaching

an opportunity for 6th form students from across the town to learn coaching and leadership skills before supporting younger students in 1:1 sessions.



The OX14 Learning Partnership

promotion and organisation of OX14 LP lectures and talks



Rugby Taster Sessions

in collaboration with Gloucester Rugby and the RFU to support community access to rugby.



The Confidence in STEM Programme

aims to support hard to reach students and those in underrepresented groups in STEM subjects. Working closely with our partner schools, it comprises funding teaching assistants to enable focussed STEM support in schools as well as running coordinated STEM enrichment activities.



FUNDRAISING

Student Fundraising

£63,074



2019–20

£15,292

2020–21

£16,925

2021–22

£30,857

FUNDRAISING

Student Fundraising

Agape and **SSNAP** are the main chosen charities for Abingdon School. We have worked in partnership with Agape, a charity that helps disadvantaged young people in Moldova supplying school equipment to deprived school students in one of Europe's poorest countries, for more than 20 years.



Abingdon 6th formers have taught English lessons, organised art, drama and music sessions, led film-making and photography workshops, and run lots of sporting activities, even managing to successfully introduce the concept of cricket to Moldova.

20 years
£100,000

In January 2022, the total Abingdon has raised for Agape over the last 20 years surpassed £100k.



It is truly transformational, creating experiences that have changed the destiny of many young people and teachers here.

Nicu Bocaneala, Director of Agape



The children in Moldova opening their Christmas presents in 2021 funded by the project.



The project is not only about fundraising but also about instilling a desire to make a difference in the lives of those less fortunate.

Adam Jenkins,
Head of Lower School



Abingdon School has primarily raised money for Agape and SSNAP but we have also raised funds for the following charities:

- Abingdon Emergency Foodbank
- Abingdon United Football Club
- Brass for Africa
- Calm
- Cancer Research UK
- Cecily's Fund
- Children in Need
- Children's Eye Cancer Trust
- Crisis
- Embrace the Middle East
- MAMA Uganda
- Meningitis Research Foundation
- Mind
- NHS
- OddBalls
- Royal British Legion
- Run for Dementia
- Save the Children India
- SSAFA
- Trussell Trust
- WWF
- Young Minds

Abingdon Science Partnership

The Abingdon Science Partnership (ASP) has continued to benefit greatly from the use of the dedicated Partnership Laboratory in the Yang Science Centre, a facility that is the envy of other school science partnerships.



ASP now offers a bespoke programme of workshops for primary schools based on the KS1 and KS2 science curriculum. Participants enjoy hands-on, practical science, and have the opportunity to use equipment that they would otherwise not see until secondary school. Visiting teachers find the sessions extremely valuable, and return multiple times throughout the year.

The innovative nature of the ASP workshops led to a producer and choreographer from the Impelo Dance Company visiting a 'Cells and DNA' session in 2019 to gain inspiration for a new production entitled 'CELL'. Staff from Abingdon School advised on the science education side of the project, along with experts in cell biology and immunology from the University of Oxford and Imperial College.

The finished production was performed for local schools at Larkmead School, at the Oxford IF and Great Exhibition Road Festivals as well as on a tour of schools across Wales.

Periods of lockdown in 2020 and 2021 were challenging for ASP but both staff and Abingdon School's Science Ambassadors in middle school and 6th form showed great resilience and imagination in developing online resources. Remote versions of primary science workshops were recorded in kitchens and gardens and then shared with partner schools via the ASP portal. Resources from a collaboration with Oundle School's partnership programme were also shared via this platform.

Visiting scientists also take advantage of the ASP laboratory. The Wellcome



I just wanted to thank you for last week, not only were the children buzzing with excitement but teachers too!

Teacher, St. Swithun's School, Kennington

Trust Centre for Human Genetics visits once a term, bringing up to eight scientists to lead a genetic sequencing workshop for sixth form students. This practical workshop extends knowledge gained in the A-level Biology curriculum, whilst giving students an insight into the career paths of each of the researchers delivering the workshop. Participating schools have included Fitzharrys, Larkmead, Carterton Community College and Europa School as well as Abingdon itself.

A Lasting Impact

Many Old Abingdonians, former staff, parents and friends choose to make a legacy pledge to Abingdon after making provision for family and friends in their wills.

The earliest document relating to the existence of what became Abingdon School dates from 1256 when John de Blosneville, Abbot of Abingdon Abbey, left a bequest for the support of 13 poor scholars. Just over 300 years later, in 1563, John Roysse re-endowed the School as a new foundation following the dissolution of the Abbey under Henry VIII. Roysse's endowment included property in the City of London, the income from which helped finance the School for the next 300 years. Sold in 1868, the proceeds underpinned the funding of the present school.

The 1563 Society exists to thank and recognise the generous commitment of those who have chosen to make a legacy

pledge to Abingdon. Society membership is growing and open to anyone who chooses to commit to the School in their will, which will make a significant difference to future Abingdonians. Members enjoy invitations to special occasions throughout the year and partners and guests are always welcome. We are fortunate to have support from an active committee of OAs who contribute greatly to this sociable and diverse society.

Anyone who chooses to remember Abingdon in their will can be assured that their legacy gift will be directed as they have instructed. Unrestricted legacies enable the School to direct funds where they will have the most impact when the time comes. Currently this is through our

means-tested bursary programme, and recent legacies have enabled us to make a real difference to future pupils in this way. Other legacies have specified support to areas of School life including rowing, buildings and extracurricular activities.

Different types of legacy bequests can be made and we would encourage you to contact Harriet Alderman in the Development Office if you would like to discuss making a provision for Abingdon in your will.

When you decide to include Abingdon in your will you join a growing community who share a deep interest in Abingdon's future.

Members of the 1563 Society

David Allen	OA 1966	Justin Hodges	OA 1989	Brian Smith	OA 1957
Shelagh Allen	Partner of OA	Martin Iredale	OA 1956	Anne Smithson	Former Staff
Clyde Aylin	OA 1952	Tony Leathem	OA 1962	John Spencer	OA 1963
David Blomley	OA 1976	Gavin Lewis	OA 1977	Kate Spencer	Partner of OA
David Bosley	OA 1989	Terence Libby	OA 1961	Mike Stevens	OA 1968 and Chair of Governors
Adrian Burn	OA 1963	Bruce Mackay	OA 1964	Richard Stone	OA 1992
Henry Carter	OA 2006	Michael Matthews	OA 1952	John Walker	OA 1969
Diana Cobban May	Honorary OA	Neil McGowan-Docherty	OA 1968	Christopher Webb	OA 1961
Bryan Costin	OA 1955	Jim Milne	OA 1960	Simon Wilden	OA 1982
Noel Crosse	OA 1972	Gerald Nicholls	OA 1952	Peter Willerton	Former Staff
John Cullen	Honorary OA and Former Staff	Robert Pezaro	OA 1947	Alan Williams	OA 1965
Kenneth Cuthbert	OA 1969	Christopher Pickup	OA 1960	Brenda Williams	Partner of OA
Tony Edwards	OA 1962	Felicity Rutland	Honorary OA and Former Staff	Martin Woodgett	Honorary OA and Former Staff
Paul Evans	OA 1975	Toby Screech	OA 1981	Cyril Woodruff	OA 1956
Ted Eveleigh	OA 1980	Olga Senior	Former Governor	Anonymous	OA 1952
Jonathan Grosvenor	OA 1979	Kevin Senior	Governor	Anonymous	OA 1967
Simon Hills	OA 1975	Norman Shurrock	OA 1953		

New members
since Sept 2019

16

Age of youngest
member

34

Current members

50

Supporting Our Community



The pandemic presented a challenge to the Community Service programme as we were suddenly unable to visit hospitals, primary schools, care homes and charity shops. However, the students were keen to find opportunities to keep our relationships with the local community alive. They wrote letters to residents, delivered afternoon tea boxes to care homes, created board games for primary school pupils and filmed a video of Abingdon's green spaces to aid the rehabilitation of patients on the Stroke Ward at Abingdon Community Hospital.

As the restrictions were lifted, we found that our bonds with the community were as strong as ever. We were welcomed back to the lounges of assisted living residences and our students were as delighted as the residents to participate in quizzes and share the cakes and cookies that they had baked at School.

We have received lovely emails praising the work of our students at the British Heart Foundation and Acacia UK charity shops. Even our students' gravel shovelling skills have been complimented by the gardening team at St Ethelwold's, where a band of students have been helping to keep the beautiful gardens in trim. We have developed a very good link with the St Ethelwold's team over the last couple of years and now some of our students are also helping some Syrian refugees with their IT skills there. Another highlight for our pupils has been inviting local residents to our termly tea parties, renowned for their tricky quiz and lively raffle.

Our students gain a tremendous amount from volunteering in the community and are delighted when they see the impact their work has on the lives of people both young and older, who live in Abingdon.

Victoria Middleton

And Finally... a few words from our Chair of Governors



Professor Michael Stevens
(OA 1968)
Chair of Governors

"Simply put, Abingdon is a school centred around community...". This quote from one of our current Upper 6th pupils, who has been in receipt of a bursary to support his time at Abingdon (see page 3), encapsulates so much of the purpose and impact of the work of the Abingdon Foundation.

Supported by the generosity of many past and present members of the Abingdon community, and by others, we are proud of our growing bursary programme; of our work in partnership with other schools; of our focus on mental health and wellbeing; and of the breadth and scale of our academic and Other Half offerings. The skill and commitment of our staff, matched by the ability, enthusiasm and determination of

our students, characterises the vibrant life of the School and allows the positive energy so evident in this report to extend in and across our wider community.

By giving, and giving back, our students and OAs are proud and committed ambassadors for an Abingdon education as a wider force for good. As an OA myself, and now Chair of the Governing Body, I am delighted to support the Foundation as a legator and, through my membership of the 110 Club, the *Seven years to change a life* bursary campaign.

I hope this Impact Report will stimulate you to consider helping the further development of our ambitions for the future too.

Join Us

in supporting Abingdon

Donations from OAs, parents, and friends of Abingdon make a critical difference, both in assisting where there is an immediate need and in securing Abingdon's future. The generosity of our donors has benefited bursaries, facilities, our partnership programme and many activities that enrich the educational experience of our pupils.



We are currently focussing on bursary support but are also planning development projects which will further enhance the School facilities for our pupils. In the immediate future this will see a much-anticipated upgrade to our boarding accommodation and we will shortly be launching an initiative in support of this development. Future developments include a dining pavilion, sports centre expansion and new rowing and cricket facilities. To learn more about any of these proposed developments, please contact the Development Office.

Ways you can support us:

Planned giving

Regular gifts enable the School to plan for the immediate future, especially our bursary provision. Donations of any size and frequency make a difference and, in June, our telethon will be an opportunity for our younger OAs to discuss regular giving with members of our community. Our *Seven years to change a life* campaign is making significant headway thanks to many committing to a regular gift, we hope many more people will consider supporting Abingdon in this way.

One-off donations

Any donation can be made online via the Abingdon School donation form. We also accept bank transfers or a cheque.

Overseas givers

The Development Office can help with tax efficient giving in North America through BSUF and CAF Canada.

Join our 110 Club

Those members of our community who choose to support a bursary for seven years at 10% of fees or more are welcomed into our 110 Club. Members receive an anonymised annual report about the bursary recipient(s) they are supporting and are hosted annually at Abingdon by the Chair of Governors. Commitments to join the 110 Club start from £160 per month plus Gift Aid.

Leave a gift in your will

The 1563 Society exists to acknowledge those who have decided to remember Abingdon in their will. We currently have 50 members, who are hosted annually by the Headmaster and invited to other events across the year. Members also receive a pair of specially commissioned enamel cufflinks or a pendant. The legacy gift form can be found on our website.

Endowment giving

The Headmaster and governors recognise the long term need for an endowment to keep Abingdon's future secure. For those wishing to have a confidential discussion regarding supporting an endowment at Abingdon, the Director of Development and Alumni Relations and the Director of Finance and Operations would be delighted to speak with you.

Gifts of time

We welcome members of our community sharing their time and expertise to support Abingdon and enrich the experience of pupils. If you would like to get involved please do get in touch.

Gift Aid

UK tax-payers may be able to claim Gift Aid on donations which increases any gift by 25%.

“

A bursary opens doors to a network of support that has a lifelong impact. Our words could not even begin to truly express our gratitude for the generosity of those who contribute to the bursary fund. Our son is largely the kind and intelligent individual he is today because of their generosity which enabled him to be totally embraced and supported by the school community, irrespective of our financial circumstances. He is their legacy of giving. We know he plans to continue that legacy when he is in a financial position to do so.

Current U6 parent



ABINGDON

To find out more about how you can support the Abingdon Foundation, please contact:

Alexa Broad

Director of Development and Alumni Relations

development@abingdon.org.uk +44 (0)1235 849117

Harriet Alderman

Development Manager

development@abingdon.org.uk +44 (0)1235 849107

Abingdon School: A company limited by guarantee.

Registered in England and Wales.

Registered Office: Park Road, Abingdon,
Oxfordshire, OX14 1DE, United Kingdom.

Company No. 3625063 Registered Charity No. 1071298

